

FOR IMMEDIATE RELEASE

PRESS CONTACT:

Camryn Hardy

camryn@taapr.com

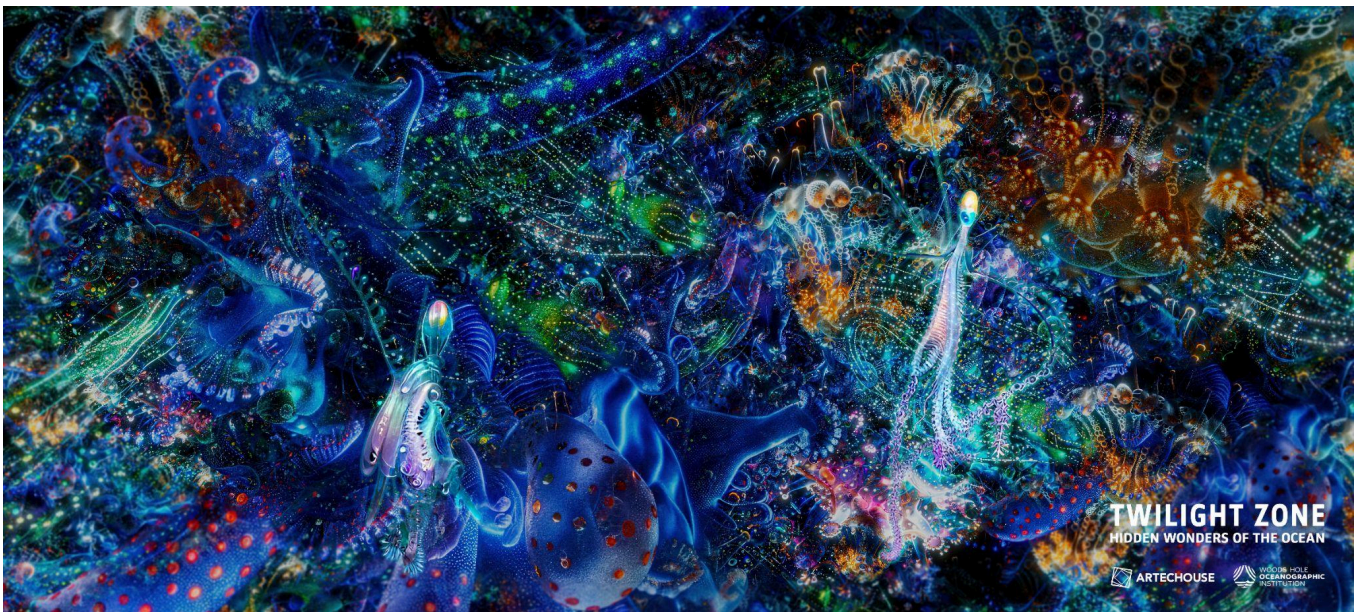
press@artechouse.com

[MEDIA AVAILABLE HERE](#)

ARTECHOUSE Invites You to Explore the Hidden Wonders of the Ocean Twilight Zone in Washington, DC

**A New Immersive Exhibition *Twilight Zone: Hidden Wonders of the Ocean* opens
September 14, 2024 at ARTECHOUSE DC**

Presented in Collaboration with Woods Hole Oceanographic Institution (WHOI)



WASHINGTON, DC — August 6, 2024 — ARTECHOUSE proudly announces the premiere of ***Twilight Zone: Hidden Wonders of the Ocean***, an immersive exhibition that plunges audiences into the mysterious depths of the ocean twilight zone. The exhibition, developed in collaboration with the **Woods Hole Oceanographic Institution (WHOI)**, aims to foster a deep emotional connection with the ocean's most enigmatic realm and inspire efforts to protect our planet, and continues ARTECHOUSE Studio's work with preeminent scientific institutions including **Society for Neuroscience** and **NASA**.

Opening to the public on September 14, 2024, at ARTECHOUSE DC, *Twilight Zone: Hidden Wonders of the Ocean* combines stunning visuals and an original musical score to create a captivating cinematic audio-visual experience celebrating the strangeness as strength and weirdness as wonderful, showcasing the vital role the twilight zone plays in our planet's health and ecosystem.

"We've explored our brains and gone to the edges of our universe, now we venture into the deepest depths of the ocean." – said **Sandro Kereselidze, Founder & Chief Creative Officer of ARTECHOUSE** – "We are thrilled to continue our collaboration with world class science organizations to allow our audiences to experience the world around them in a new light. This show is a can't miss, trust us."

Twilight Zone: Hidden Wonders of the Ocean highlights the awe-inspiring nightly migration of ocean twilight zone creatures and their intricate connections to the planet's health, including [helping regulate the earth's climate](#). This groundbreaking exhibition offers a 24-minute cinematic journey enveloping the audience in immersive 270-degree projections that span from floor to wall, complemented by six interactive installations and six XR activations. Together, they create a richer exploration of the mysterious underwater world through a fusion of artistic and interactive expressions.

Science as Our Superpower: This exhibition showcases science as a powerful tool that allows us to uncover the ocean's hidden wonders and the universe. Through evolving technology and research, we become stewards of knowledge and discovery.

The Beauty and Mystery of the Ocean Twilight Zone: Experience the enchanting and mysterious nature of the ocean twilight zone through immersive audio and visually captivating designs. The exhibition highlights the aesthetic richness of the twilight zone, evoking an emotional response from viewers.

Art as a Bridge to Emotions: In line with ARTECHOUSE's mission, this exhibition demonstrates how the fusion of art and science creates a powerful medium for communication. ARTECHOUSE Studio employs its distinctive approach to experiential storytelling to connect with viewers on an emotional level, emphasizing the importance of sustainable human interaction with the ocean.

Exhibition Highlights:

- **Immersive 24-Minute Cinematic Experience:** Dive into a 24-minute journey that illustrates the ocean twilight zone's beauty and diversity. The narrative spans the

24-hour cycle of a Diel Vertical Migration, showcasing the interconnectedness of marine life and their contribution to keeping our planet healthy.

- **Interactive Installations:** Dive deeper into this mysterious part of the ocean through six interactive installations and explore how cutting-edge ships, robots, and submersibles like the Mesobot help us sense and discover a world largely hidden from view.
- **XR Activations:** Discover additional layers of narrative through six XR activations that blend artistic expression with scientific data, offering a more immersive exploration of the ocean twilight zone.

The ARTECHOUSE XR Bar features signature drinks curated for the exhibition utilizing local and fresh ingredients, and complemented by extended reality (XR) activations brought to life by the ARTECHOUSE mobile app.

About ARTECHOUSE:

An industry leader in digital and experiential art, ARTECHOUSE expands the possibilities of art through cutting-edge technology-driven exhibitions. ARTECHOUSE connects progressive ideas, artists, and audiences to stimulate innovation and creativity at the intersection of art, science, and technology. What began as the nation's first digital art space now serves as a home, both online and offline, for technology-driven art innovation, empowering and funding the creation of new, experiential art forms that make an impact.

ARTECHOUSE Studio is an interdisciplinary team of designers, architects, producers, and storytellers working together to turn ideas and concepts into cutting-edge, technology-driven experiences.

artechouse.com \ \ [@artechouse](https://twitter.com/artechouse) \ \ [#artechouse](https://hashtagearthouse)

About Woods Hole Oceanographic Institution (WHOI):

The Woods Hole Oceanographic Institution (WHOI) is a private, non-profit organization dedicated to marine research, engineering, and higher education. Established in 1930, WHOI is renowned for its multidisciplinary approach, superior ship operations, and unparalleled deep-sea robotics capabilities. The organization plays a leading role in ocean observation, pushing the boundaries of knowledge and possibility through groundbreaking discoveries and technological advancements.

What is the Ocean Twilight Zone?

Far below the sunlit surface, the ocean twilight zone abounds with life. Stretching from about 200 to 1,000 meters deep across the global ocean, this middle layer of water—also known as the mesopelagic—spans from just below where light can still support photosynthesis down to utter darkness at the edge of the deep. Microbes, plankton, jellies, fish—from the microscopic to the gargantuan, everything that lives in this otherworldly realm has amazing adaptations for the challenges of such an extreme environment. Many twilight zone inhabitants—numbering in the trillions—travel to and from surface waters to feed each night - the largest migration on the planet.

Tickets:

Tickets are \$15–35 with special pricing for DMV Residents and Families Monday–Friday. Book in advance online.

Off-Peak Hours: Monday–Thursday 10am–6pm

Peak Hours: Monday–Thursday 7pm–close, Friday–Sunday all day

LOCATION:

ARTECHOUSE DC, 1238 Maryland Avenue SW, Washington, DC 20024

HOURS OF OPERATION:

General Hours: Monday - Sunday, 10 AM - 10 PM Sessions are every 30 minutes. The last session begins at 9 PM

XR Bar Hours: Monday - Thursday: 4 PM - Close Friday - Sunday: 11 AM - Close

TICKETS:

Off-Peak Hours: Monday–Thursday 10am–6pm

Peak Hours: Monday–Thursday 7pm–close, Friday–Sunday all day

Visitors who book off-peak save on visits to ARTECHOUSE DC

- Anytime Tickets: \$35 (Select a day, visit anytime)
- General Admission: \$25
- Children (under 4): Free
- Students & Seniors (65+): \$20
- Military & First Responders: \$20

- Weekday Family Pack: 20% off a minimum of 4 tickets, maximum 9
- Live in the DMV? Save \$5 off Admission Tickets off-peak (Proof of Residency Required)

ARTEHOUSE DC will offer a number of one-day-only events throughout the exhibition. For more information on ticketed events, visit <https://www.artehouse.com/location/dc/>.

- **Sensory Friendly Experience:** Sunday, September 22, 2024 / 10am
- **Pay What You May:** Monday, September 30, 2024 / 10am-10pm

Book in advance and save on your visit. Single and group tickets can be reserved in advance at <https://www.artehouse.com/location/dc/>